

Attachment 5 - DCP masterplan maps



Design Notes

1. Puckeys Estate existing vegetation provides inspiration for plant selection within the Innovation Campus.
2. Existing open playing fields maintained as stormwater control.
3. Existing historic building reused as child care facility
4. Student accommodation precinct
5. Secondary vehicle entry with native street tree planting.
6. Water quality ponds.
7. Pedestrian spine with paved forecourts to building entries.
8. Existing Cabbage Tree Creek riparian corridor to be upgraded.
9. Proposed new entry with bridge acting as a sculptural element.
10. Squires Way entry with paved court, low walling and signage.
11. Water quality ponds act as visual and recreation focus.
12. Pedestrian corridor between buildings with informal paths and plantings.
13. Innovation Way main spine road lined with native trees.
14. Pond development to act as water quality device prior to existing site.
15. Existing remnant swamp oak forest.
16. Squires Way. Groups of native trees provide view corridors to built form.



Landscape Masterplan 2012

TBLA Drawing Number 001

Date 16.03.2012

Figure 7: Precinct Plan - Landscape Structure

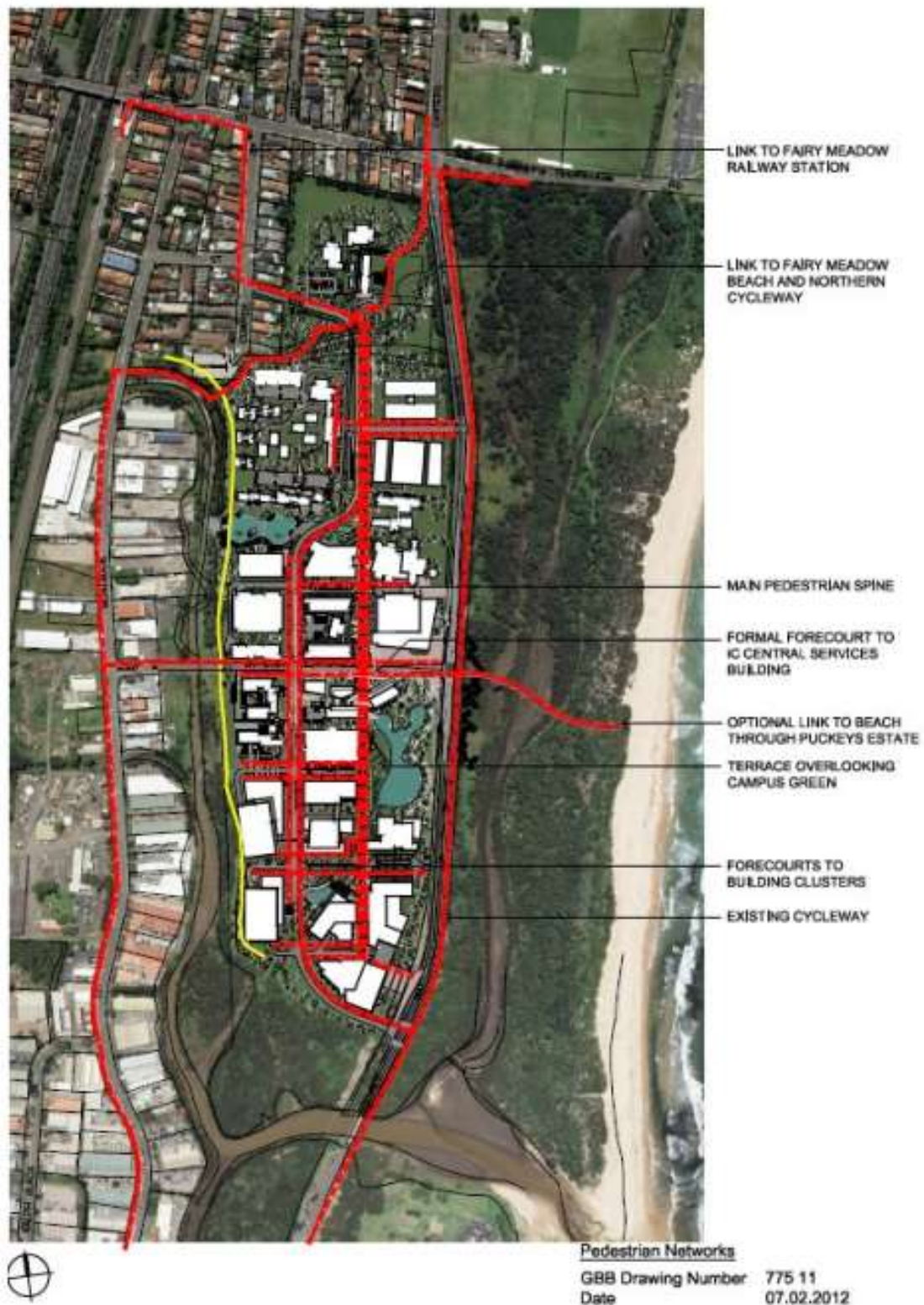


Figure 8: Precinct Plan - Pedestrian Network



0 50 100 250m
SCALE 1:5000 @ A4

Notional Leased Sites
GBB Drawing Number 775 13
Date 24.02.2012

Figure 10: Notional Development Sites



Figure 32: Notional Staging - Ultimate